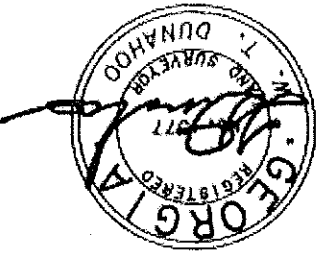
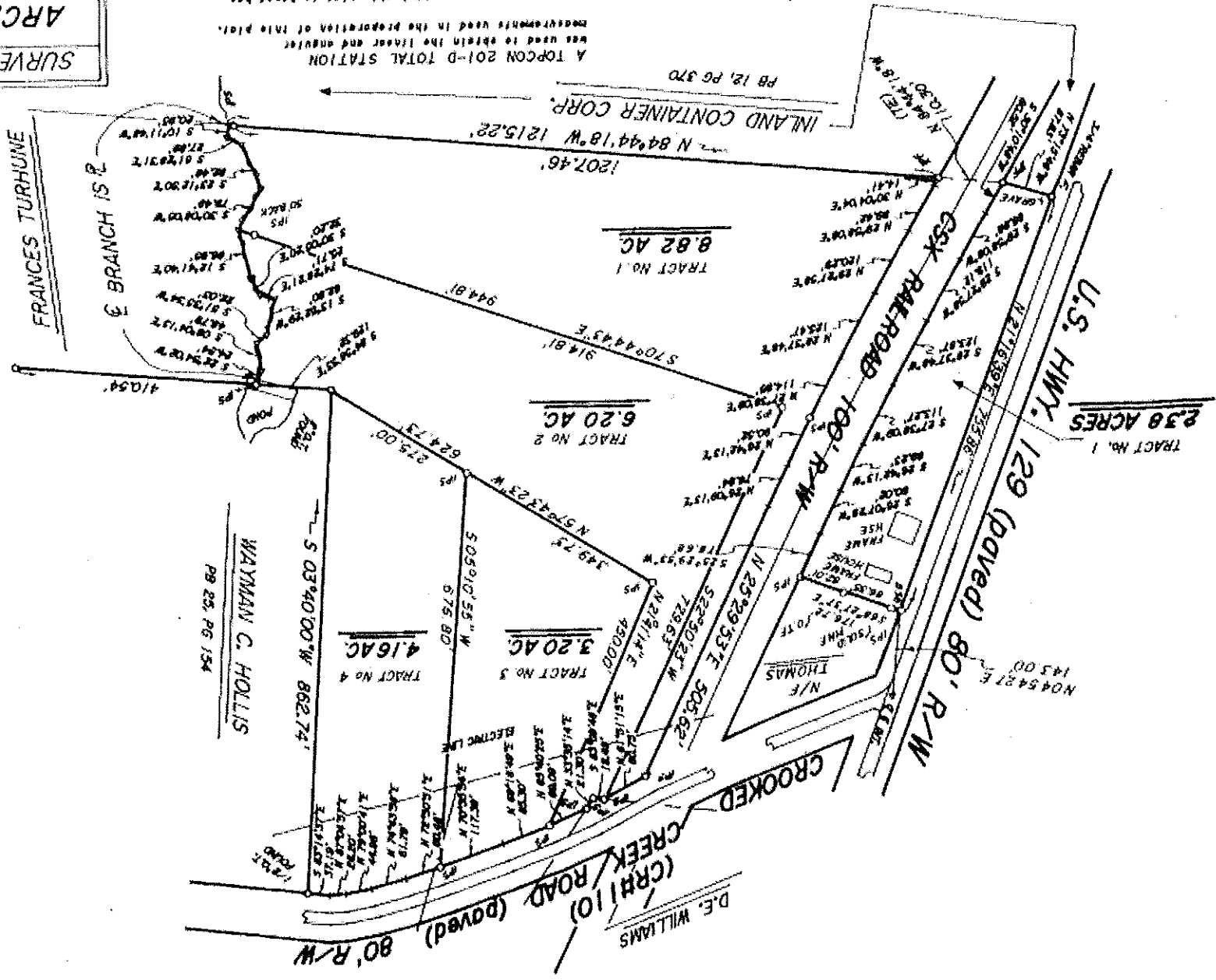


STATE OF GEORGIA			
SURVEY FOR			
ARCADE HOMES, INC.			
CITY	COUNTY	GRID	DATE
JACKSON	CAD	242	3-5-97
SCALE	1"=200'		
W. T. DUNAHOO AND ASSOCIATES			

REVISED 9-24-97

A TOPCON 201-D TOTAL STATION was used to obtain the linear and angular measurements used in the preparation of this plan. The field data upon which this plan is based has a closure error of one foot in 10,000 feet and an angular error of 0.25 per angle point and was adjusted using the compass rule. This survey has been selected for closure and is shown on the attached plat in accordance with the provisions of the Georgia Surveying Code.



APPROVED FOR RECORDING
 Jackson County Planning Commission

STATE OF GEORGIA
 Superior Court
 Jackson, Ga 8
 Tried
 Losp M
 Recorded
 Oct 9
 1997
 Page 11
 Book 51
 Clerk

